

Shadow System



Why NOVO?

The most experienced team, In-House Research and Development, innovative technology, superb raw materials, we offer the best in every class:



Image Quality



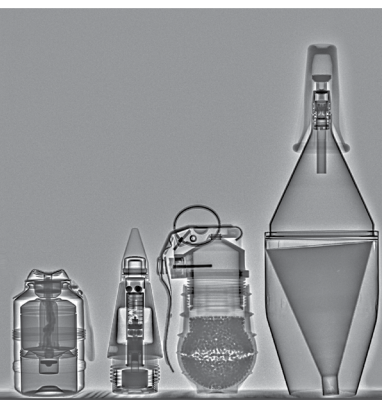
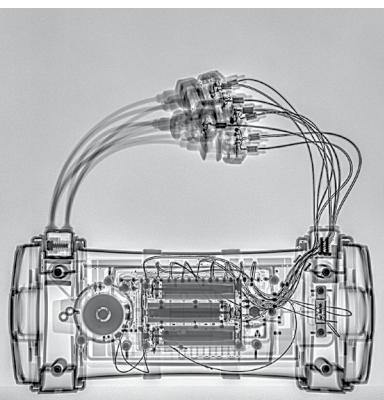
Reliability



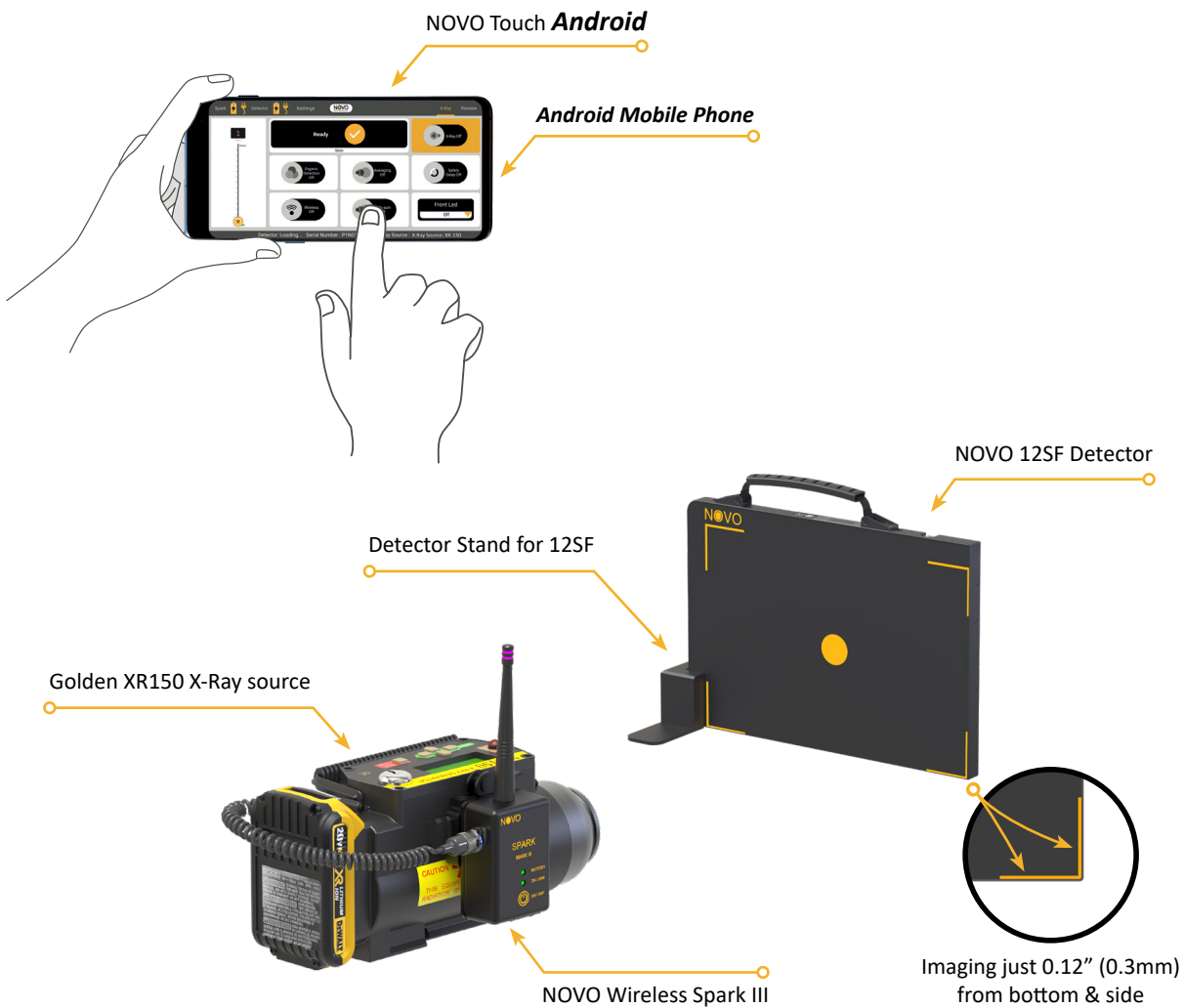
Ease of Use



Professional Support



Shadow System



- *Glass Free Technology*
- *Detector only 2.2 lbs. (1 Kg)*
- *Wired & wireless operation mode*
- *Working system only 8.8 lbs. (4Kg)*
- *Imaging just 0.12" (0.3mm) from bottom & side*
- *Android Phone/Windows tablet operation*
- *Digital Amorphous Silicon Detector, not a CR plate that needs to be scanned*
- *Compatible with Android XTK*

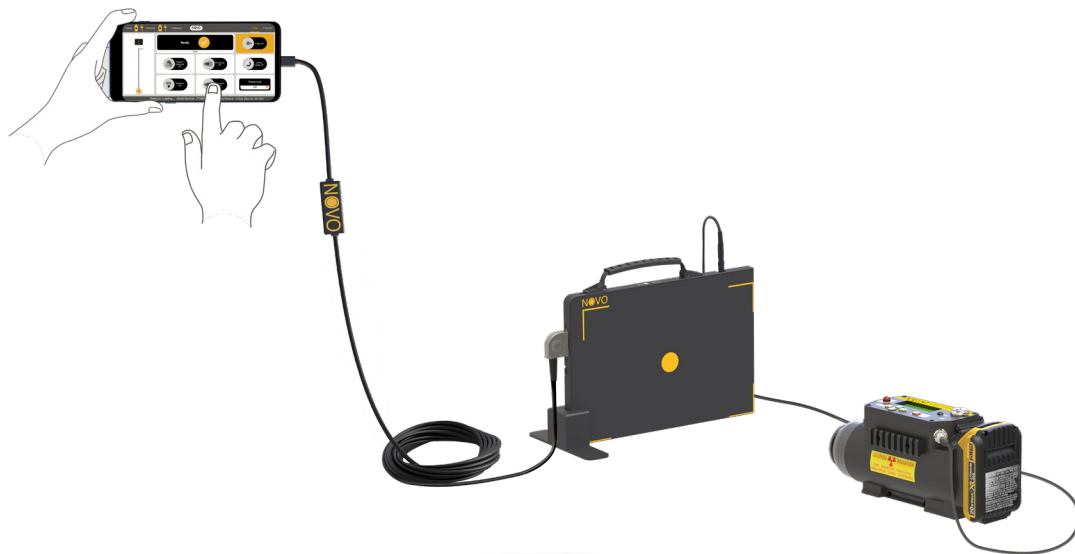


- *Dead man's switch option - 500 images stored internally (No phone/tablet required)*

Shadow Backpack

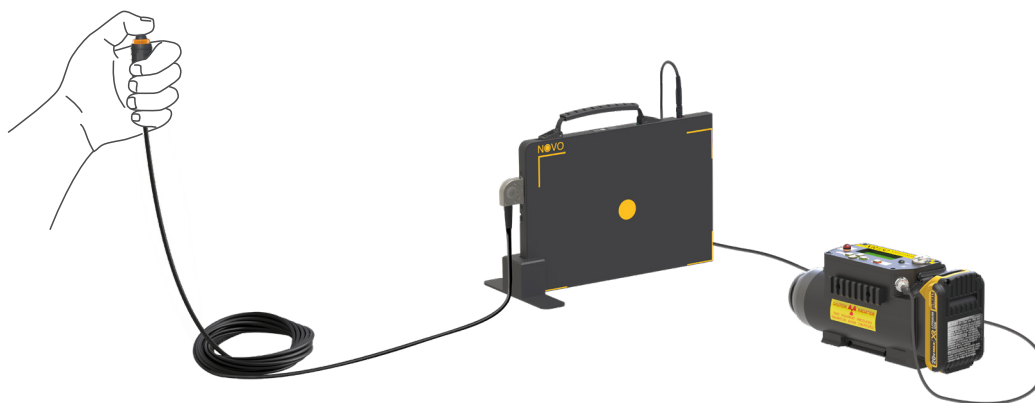


Android Wired Setup



Dead Man's Switch Setup

(No Mobile Phone/Tablet/System Controller Required)



Windows Operation



Components

Detector

- Lightest in the Market
- Unmatched Image Quality

Detector Model	NOVO 12SF	
Steel Penetration *	3.5" (90mm)	
Detector Weight	2.2 lbs. (1kg)	
Detector Load Proof	220 lbs. (100kg)	
Detector Imaging Area	6.75" x 10.1" (17.2cm x 25.8cm)	
Detector Size	7.7" x 11.1" (19.5cm x 28.2cm)	
Active Area (Imaging Area / Detector Size)	80% Active Area	
Detector Drop Test	30" (75cm)	
Detector Thickness	0.6" (15mm)	
Bit Depth	16 bit latest generation	
Connector	Titanium Magnetic Dual Direction Connector	NOVO 12SF 2.2 lbs. (1kg)



* Tested with Golden XRS-3 at ~10" (25cm)

Controllers

Spark III

- Weight 0.7 lbs. (0.3 kg)
- 6 hours Built-in Battery
- Wireless Up to 400m Line of Sight
- Support All Golden Sources
- Quick connection to source
- MIL-DTL 38999 connectors
- Weatherproof design
- LED Indications
- Supports Parallel Multi Location Control & Display
- Supports Golden On/Off & battery status info



Falcon II

- 2lbs (900 grams)
- Unlimited operation with AC (POE)
- 6+ hours Built-in Battery
- Wired/Semi Wired
- Wireless Up to 500m Line of Sight
- Supports All Golden Sources
- Quick connection to source
- MIL-DTL 38999 connectors
- Weatherproof design
- GPS
- LED Indications
- Supports Parallel Multi Location Control & Display
- Supports Golden On/Off & battery status info



* NOVO Control Box can be ordered instead of the Falcon II

Components

Tablets *(Most popular)*



Samsung S20

Panasonic Toughpad™ FZ-G1

	Samsung S20	Panasonic Toughpad™ FZ-G1
Screen Size	6.2"	10.1"
Screen Resolution	3200x1440	1920x1200
Screen Brightness (NIT)	800	800
Touch Screen	✓	✓
Operating System	Android 10	Windows 10
MIL-STD-810G	✗	✓
IP Rating	IP68	IP65
Battery Operation Time at 800 NIT	10+ hours	5+ hours

**Additional tablets and laptops supported*

X-Ray Sources

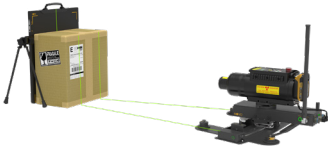


	Litex	XR150	XR200	XRS-3	XRS-4
KVP	120	150	150	270	370
Weight	5.6 lbs.(2.5kg)	5.9 lbs. (2.7 kg)	10.7 lbs. (4.8 kg)	11.8 lbs. (5.3 kg)	18.3 lbs. (8.3 kg)
Size	11.7" x 3.2" x 4.7" (29.9cm x 8.2cm x 12cm)	10.4" x 3.5" x 4.7" (26.6cm x 9cm x 12.1cm)	10.7" x 4.3" x 5.8" (27.2cm x 10.8cm x 14.8cm)	14.2" x 4.3" x 5.8" (36.1cm x 10.9cm x 14.8cm)	19.3" x 4.8" x 7.1" (48.9cm x 12.2cm x 17.9cm)

Accessories

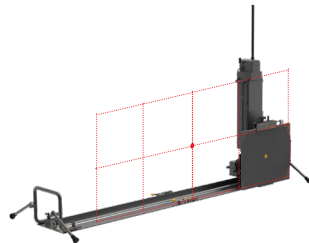
3D ARC

3D Imaging with exact X, Y, Z measurements



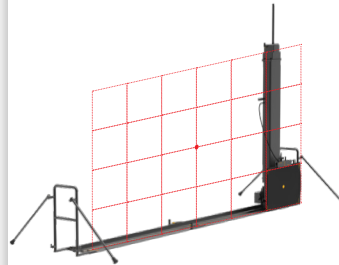
Folding Slider L

Ideal for screening large objects



Folding Slider XXL

Super sized, ideal for screening XXL objects



Eagle

Extremely long range wireless transceiver up to 3.3km (2 miles) LOS



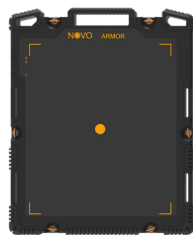
Extension Cables

Available at 50m, 100m and 150m for a total of 300m



Armor

Additional mechanical protection to the Detectors



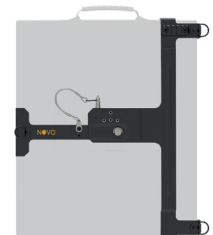
Soft Protective Cover

Additional weather & impact protection



Tripod Mount

Firmly holds the detector and provides various positioning options



Lookout

Organic detection, live Video & Audio



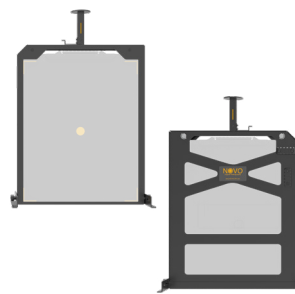
Robot C-Arm

Detector and X-Ray Holder



Robot Detector Frame

Lightweight, shock absorbing



Wireless Super Ranger

Increases wireless distance and stability



Compatible with the XTK® Software

GSA **Advantage!**

Contract # **GS-07F-163DA**