

## Rover II System



## Why NOVO?

The most experienced team, In-House Research and Development, innovative technology, superb raw materials, we offer the best in every class:



*Image Quality*



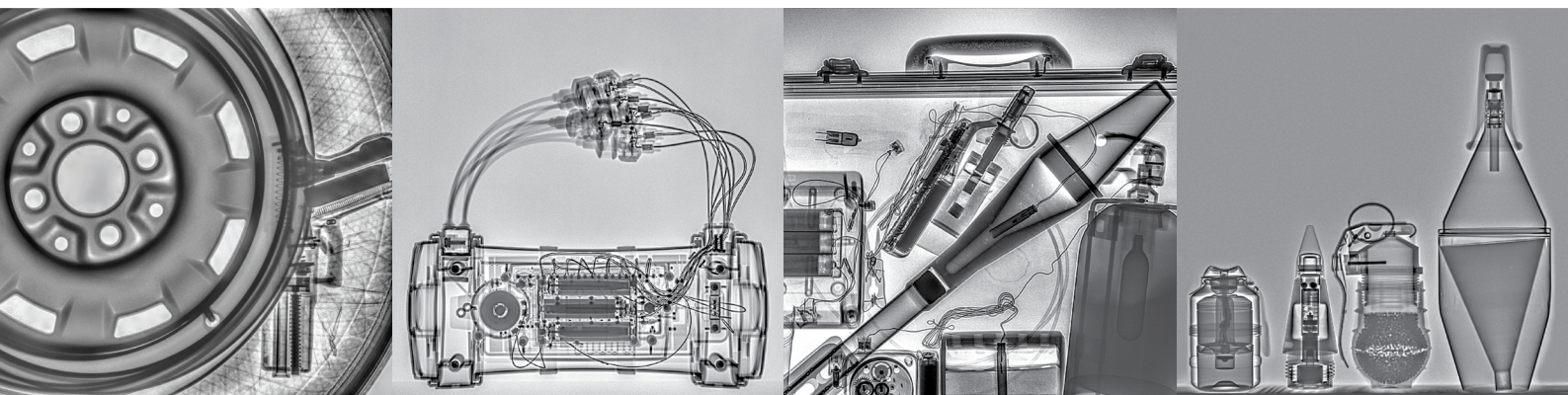
*Reliability*



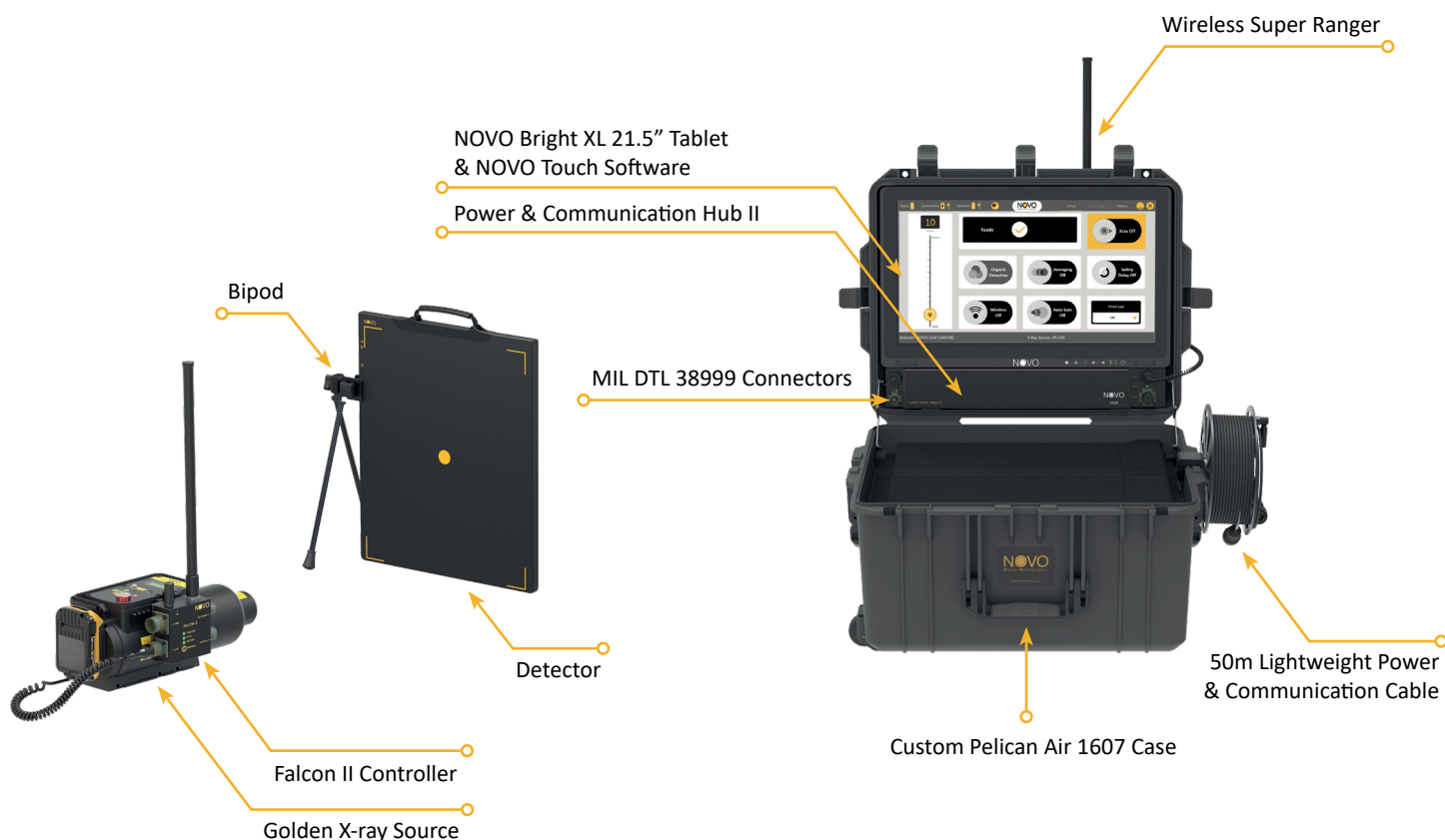
*Ease of Use*



*Professional Support*



# Rover II System



## Components

### Detector Options

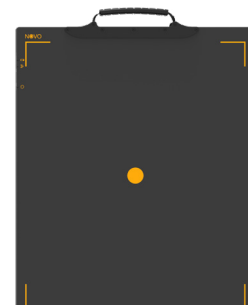
- Lightest in the Market
- Unmatched Image Quality



NOVO 12SF  
2.2 lbs. (1kg)



NOVO 15WS  
3.5 lbs. (1.6kg)



NOVO 22WS  
6.1 lbs. (2.8kg)

Detector Model	NOVO 12SF	NOVO 15WS	NOVO 22WS
Steel Penetration *	3.5" (90mm)	3.5" (90mm)	3.5" (90mm)
Detector Weight	2.2 lbs. (1kg)	3.5 lbs. (1.6kg)	6.1 lbs. (2.8kg)
Detector Load Proof	441 lbs (200kg)	661 lbs. (300kg)	661 lbs. (300kg)
Detector Imaging Area	6.75" x 10.1" (17.2cm x 25.8cm)	9.1" x 11.2" (23.1cm x 28.4cm)	14.0" x 16.8" (35.6cm x 42.7cm)
Detector Size	7.7" x 11.1" (19.5cm x 28.2cm)	10.6" x 13" (26.9cm x 33cm)	15.2" x 18.2" (38.5cm x 46.2cm)
Active Area (Imaging Area / Detector Size)	80% Active Area	74% Active Area	85% Active Area
Detector Drop Test	39.4" (100cm)	39.4" (100cm)	39.4" (100cm)
Detector Thickness	0.6" (15mm)	0.6" (15.6mm)	0.6" (15.6mm)
Bit Depth	16 bit latest generation	16 bit latest generation	16 bit latest generation
Connector	Titanium Magnetic Dual Direction Connector	Titanium Magnetic Dual Direction Connector	Titanium Magnetic Dual Direction Connector

\* Tested with Golden XRS-3 at ~10" (25cm)

# Components

## Falcon II

- 2lbs (0.9 kg)
- Unlimited operation with AC (POE)
- 6+ hours Built-in Battery
- Wired/Semi Wired
- Wireless Up to 500m Line of Sight
- Supports All Golden Sources
- Quick connection to source
- MIL-DTL 38999 connectors
- Weatherproof design
- GPS
- LED Indications
- Supports Parallel Multi Location Control & Display
- Supports Golden On/Off & battery status info



\* NOVO Control Box can be ordered instead of the Falcon II

## Tablets (Most popular)



	NOVO Bright XL	NOVO Bright L	Panasonic Toughbook® CF-33	Panasonic Toughpad™ FZ-G1	Samsung S20
Screen Size	21.5"	17"	12"	10.1"	6.2"
Screen Resolution	1920X1080	1920x1200	2160x1440	1920x1200	3200x1440
Screen Brightness (NIT)	1500 (!) Super Brightness	1500 (!) Super Brightness	1200	800	800
Touch Screen	✓	✓	✓	✓	✓
Operating System	Windows 10	Windows 10	Windows 10	Windows 10	Android

\*Additional tablets and laptops supported

## X-Ray Sources



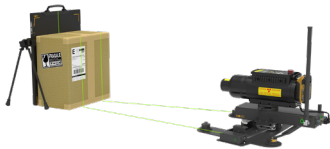
	Litex	XR150	XR200	XRS-3	XRS-4
KVP	120	150	150	270	370
Weight	5.6 lbs.(2.5kg)	5.9 lbs. (2.7 kg)	10.7 lbs. (4.8 kg)	11.8 lbs. (5.3 kg)	18.3 lbs. (8.3 kg)
Size	11.7" x 3.2" x 4.7" (29.9cm x 8.2cm x 12cm)	10.4" x 3.5" x 4.7" (26.6cm x 9cm x 12.1cm)	10.7" x 4.3" x 5.8" (27.2cm x 10.8cm x 14.8cm)	14.2" x 4.3" x 5.8" (36.1cm x 10.9cm x 14.8cm)	19.3" x 4.8" x 7.1" (48.9cm x 12.2cm x 17.9cm)



# Accessories

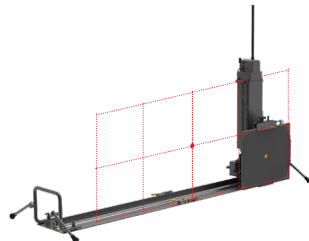
## 3D ARC

3D Imaging with exact X, Y, Z measurements



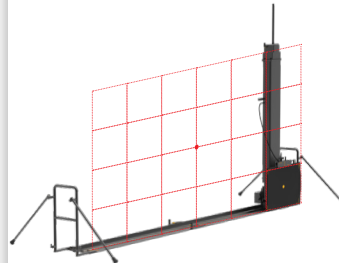
## Folding Slider L

Ideal for screening large objects



## Folding Slider XXL

Super sized, ideal for screening XXL objects



## Eagle

Extremely long range wireless transceiver up to 3.3km (2 miles) LOS



## Extension Cables

Available at 50m, 100m and 150m for a total of 300m



## Armor

Additional mechanical protection to the Detectors



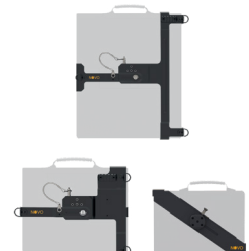
## Soft Protective Cover

Additional weather & impact protection



## Tripod Mount

Firmly holds the detector and provides various positioning options



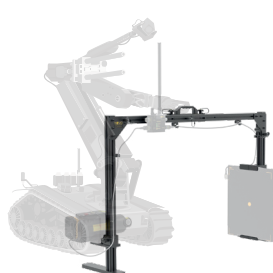
## Lookout

Organic detection, live Video & Audio



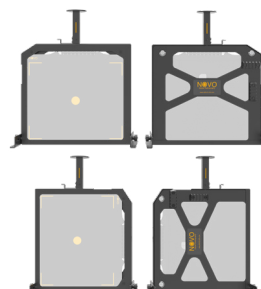
## Robot C-Arm

Detector and X-Ray Holder



## Robot Detector Frame

Lightweight, shock absorbing



## Wireless Super Ranger

Increases wireless distance and stability



Compatible with the XTK® Software

**GSA** *Advantage!*

Contract # **GS-07F-163DA**