

Accessories



Why NOVO?

The most experienced team, In-House Research and Development, innovative technology, superb raw materials, we offer the best in every class:



Image Quality



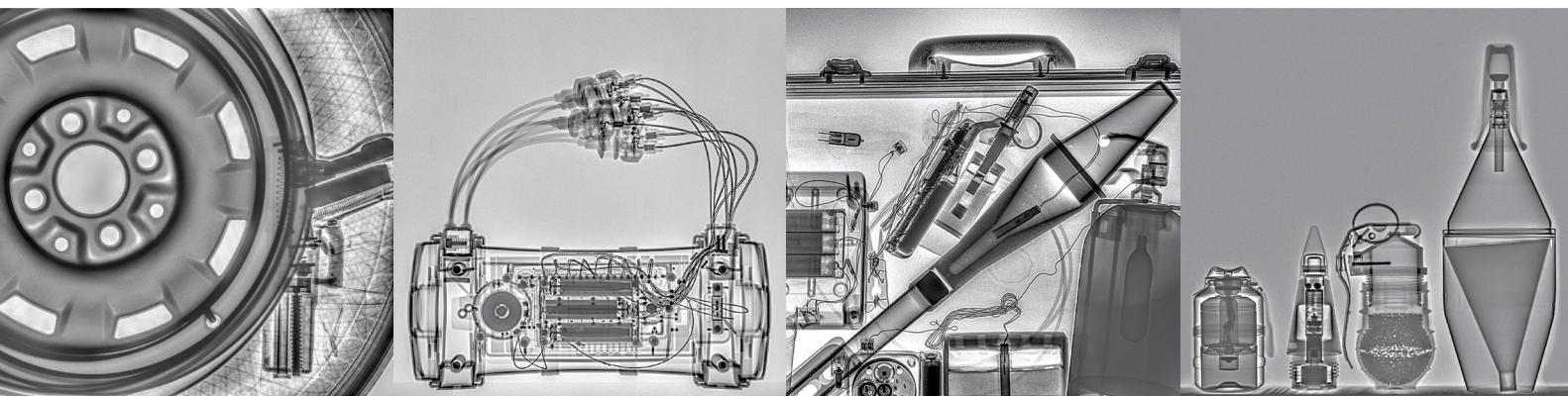
Reliability



Ease of Use



Professional Support



Accessories

Lookout

Organic Detection, Live Audio and Video

The NOVO Lookout is a Lightweight, 3 in 1 accessory enabling the following capabilities.

Organic Detection

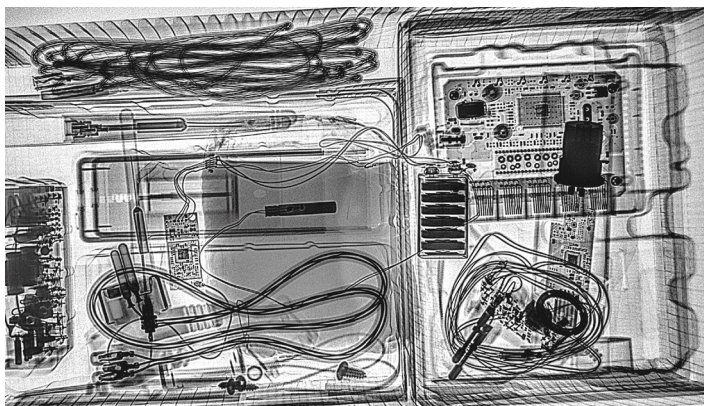
- Assists in identification of the content and nature of an inspected item by providing organic / inorganic detection
- A Colorized X-Ray Image is Automatically Displayed

Live Video

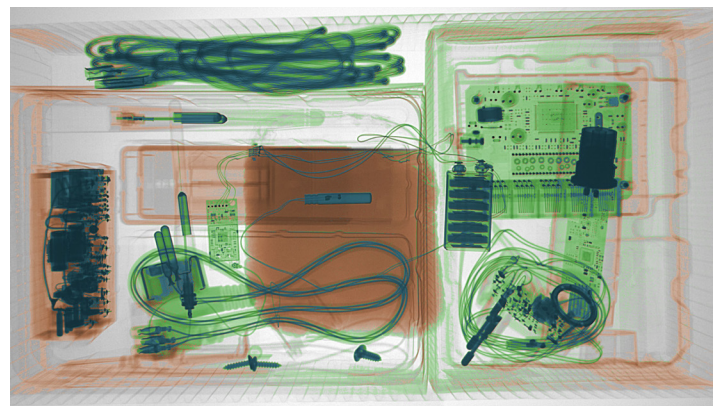
- Provides a Live Video stream of the inspected item
- The Camera switches automatically between day/night mode (Infra-red)
- Provides a Still Image that can be grabbed and used for analysis and documentation

Live Audio

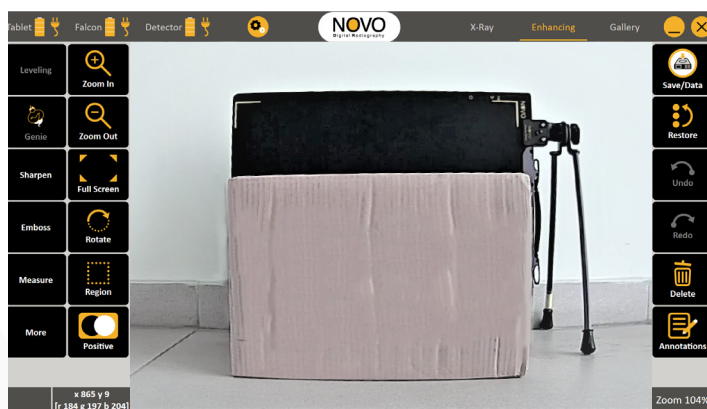
- Provides a Live Audio stream of the inspected environment allowing the operator to hear the Golden's "clicks" in addition to monitoring the sounds in the surrounding area
- Controlled completely by the NOVO Touch Software
- Compatible with all Golden Engineering sources including the XRS4



X-Ray Image



Organic & Inorganic Detection Image



External Still Image



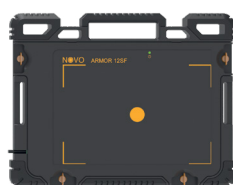
0.6 lbs. (1.3kg)
4.7" x 4.7" x 2.7"
(12cm x 12cm x 7cm)

Accessories

Armor Kit

The Armor Kit Contains the NOVO Armor, which provides additional mechanical protection to the NOVO Detectors, Armor Stand and a traveling soft cover.

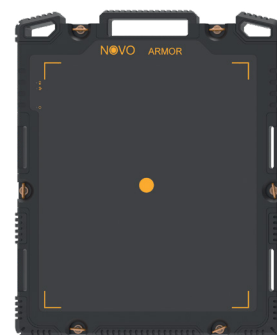
- Newest shock absorbent technology
- Water resistant design
- Supports wired & wireless communication
- Multiple positioning options
- Tripod connection using the Built-in 1/4" threads
- Simple Detector battery replacement



NOVO Armor 12SF



NOVO Armor 15WS



NOVO Armor 22WS

Armor Protective Cover for 12SF Detector	Armor Protective Cover for 15WS Detector	Armor Protective Cover for 22WS Detector
4lbs. (1.8kg)	6.4lbs (2.9kg)	9.2lbs. (4.2kg)
12.2" x 15.3" x 1.9" (31cm x 39cm x 5cm)	16.5" x 15.3" x 1.9" (42cm x 39cm x 5cm)	22.4" x 18.8" x 2.3" (57cm x 47cm x 6cm)

Soft Protective Cover

The Detector Soft Protective Cover provides additional lightweight protection for NOVO Detectors.

- Additional weather & impact protection
- Special opening for Tripod Mount access
- Various positioning options using a carrying strap or D-Rings
- Supports wired & wireless communication
- Lightweight & small footprint



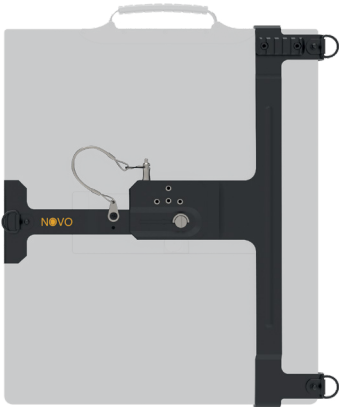
Soft Protective Cover for 15WS Detector	Soft Protective Cover for 22WS Detector
1.3lbs. (0.6kg)	2.4lbs. (1.1kg)
12.2" x 14.9" (31cm x 38cm)	19.6" x 16.1" (50cm x 41cm)

Accessories

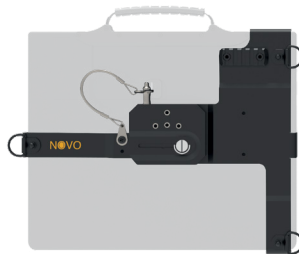
Tripod Mounts

The Tripod Mount is a lightweight accessory that firmly holds the detector and provides various positioning options.

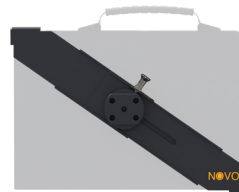
- Four 1/4" standard threads (for portrait and landscape) for tripod or manipulation arm connection
- Secured connection to the Detector using a safety pin
- Numerous positioning options



NOVO 22WS Tripod Mount



NOVO 15WS Tripod Mount



NOVO 12SF Tripod Mount

Communication Cable

The communication cable provides reliable and fast data transmission between the various system parts.

- Power Over Line for unlimited operation when using an external power source (using the Control Box and Falcon II)
- Maximum of 300m wired operation range
- Lightweight, robust custom reel- connected to the case or as "stand-alone"
- Extension cables of 50m, 100m and 150m

Backpack Reel



Extension Reel



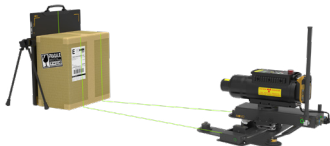
Pelican Reel



Additional Accessories

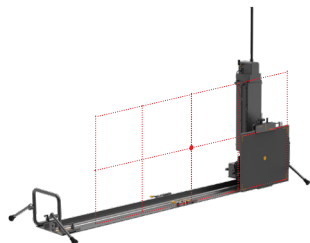
3D ARC

3D Imaging with exact X, Y, Z measurements



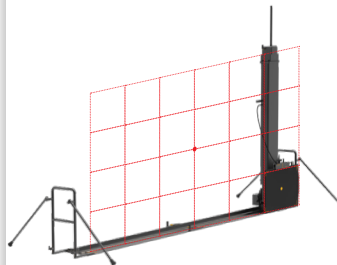
Folding Slider L

Ideal for screening large objects



Folding Slider XXL

Super sized, ideal for screening XXL objects



Eagle

Extremely long range wireless transceiver up to 3.3km (2 miles) LOS



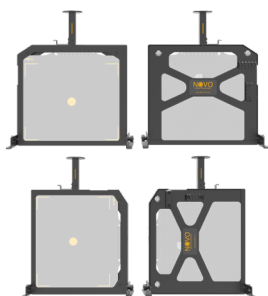
Robot C-Arm

Detector and X-Ray Holder



Robot Detector Frame

Lightweight, shock absorbing



Wireless Super Ranger

Increases wireless distance and stability



Compatible with the XTK® Software

GSA *Advantage!*

Contract # **GS-07F-163DA**